



A collaborative state and local partnership striving to conserve and connect people to valued natural resources in the Lehigh Valley through targeted outreach, recreation, education and land protection



Vision: By 2015, greenways and trails connect natural and cultural resources across the Lehigh Valley linking urban areas to outdoor experiences, protecting watersheds, and retaining the character of the landscape, the region's heritage and the community

Lehigh Valley Greenways Goals:

- **Goal 1 Land Conservation & Restoration** - Conserve and connect high conservation value natural areas by preserving unprotected natural areas and watersheds; conduct riparian buffer restoration
- **Goal 2 Outdoor Recreation & Trail Connections** - Create greenways and trails that connect people and outdoor recreation experiences to valued natural, recreational, and cultural resources
- **Goal 3 Community Revitalization** – Revitalize Allentown, Bethlehem, and Easton by integrating green infrastructure into riverfront development, greenways and trails, and neighborhood projects
- **Goal 4 Local Education & Outreach** - Increase the understanding & use of smart growth land use practices to create more livable & sustainable communities

Conserving and Connecting 5 Sub-Landscapes:

- **Two Rivers Area** – including the Bushkill Creek Watershed, Jacobsburg Environmental Education Center (DCNR State Park)
- **Martins Jacoby Watershed** – including Martins & Jacoby Creeks, Greater Minsi Lake Corridor
- **Jordan Creek Greenway** – including Trexler Nature Preserve
- **Kittatinny Ridge** – Blue Mountain, continuous forested ridge in both counties
- **Lehigh Valley Highlands** – including South Mountain, Lehigh Mountain, and South Mountain Preserve

Advancing DCNR Conservation Landscape Initiative (CLI)



The Conservation Landscape Initiative is a value-driven, place-based approach that drives strategic investment and actions around sustainability, conservation, community revitalization, and recreational projects in seven large landscapes. These collaborations have developed in landscapes where there are strong natural assets, local readiness and buy-in, and state level investment support.

Contact: Sherry Acevedo at 610-923-3548 ext. 226 or sherry@delawareandlehigh.org
Visit www.delawareandlehigh.org

The Partnership:

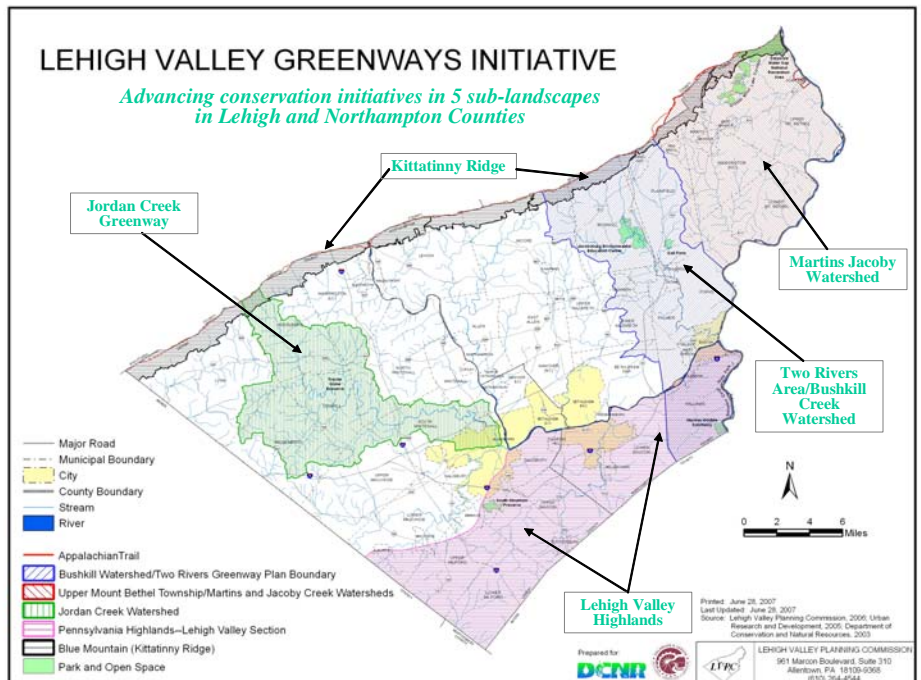
A partnership of nearly 25 state, local, and regional organizations working collaboratively to advance the Lehigh Valley Greenways vision and goals across 5 sub-landscapes in the Lehigh Valley including:

- **Delaware & Lehigh NHC (D&L)** – local lead and administrative partner with DCNR
- **State Agencies** – Department of Conservation and Natural Resources (DCNR), Department of Environmental Protection (DEP)
- **Conservancies** - Wildlands Conservancy, Heritage Conservancy, Natural Lands Trust, The Nature Conservancy
- **Lehigh and Northampton Counties** – Open Space Initiative, Green Future Fund, Conservation Districts, Parks Departments, Department of Community and Economic Development (DCED)
- **Non-profit organizations** - Bushkill Stream Conservancy, Martins Jacoby Watershed Association
- **Lehigh Valley Planning Commission**
- **Pennsylvania Environmental Council (PEC)**

Partnership Major Accomplishments:

- Over 1,000 native trees planted in the Cities of Easton, Bethlehem, and Allentown through Urban Forestry Initiatives and Lehigh Valley Tree Vitalize
- Twenty-four Environmental Advisory Councils (EACs) established
- *Leaders in the Field* booklet highlights Seven Successful Municipal Open Space Referendums in the Lehigh Valley
- Four model environmental ordinance regulations created by Lehigh Valley Planning Commission
- Over 1,000 acres of easement or fee simple acquisition in land conservation
- Eight stream restoration projects along the Bushkill, Martins Creek, and Lehigh River completed; more than 3200 native plants restored the stream bank
- Three environmental education centers to be constructed at Jacobsburg, Trexler Nature Preserve, and Lehigh Gap Nature Center
- More than 20 miles of trail built connecting communities and greenway corridors

Funding provided by the PA Department of Conservation and Natural Resources (DCNR), Bureau of Recreation and Conservation, Growing Greener Environmental Stewardship Fund, administered by the Delaware & Lehigh National Heritage Corridor, Inc.



Contact: Sherry Acevedo at 610-923-3548 ext. 226 or sherry@delawareandlehigh.org
Visit www.delawareandlehigh.org