



# ALONG THE CORRIDOR

[www.delawareandlehigh.org](http://www.delawareandlehigh.org)

A NEWSLETTER OF THE DELAWARE & LEHIGH NATIONAL & STATE HERITAGE CORRIDOR

## Trail Tenders Do Battle with Invasive Species

The D&L Trail Tenders, under the supervision of Outreach Coordinator Dennis Scholl, have made impressive progress in improving a number of sites along the D&L Canal. In particular, the Tenders have been hard at work on Sand Island and at Lock #43 in Bethlehem.

The Sand Island project has been especially challenging, says Scholl. Invasive species, primarily honeysuckle and Tree of Heaven, have grown unchecked for decades and are taking a toll on the native vegetation and wildlife.

The work required to remove the invasive plants, though, can be back-breaking. Removing the bushes starts with chopping through the trunk in order to cut off the water supply. Next, Tenders use special tools called “mattocks” to pull out the stumps and roots.

The City of Bethlehem has been a big help, granting the Tenders use of several pieces of heavy machinery, personnel (even on weekends), and truckloads of compost and wood chips.

“They’re doing all the hard, grubby work that I don’t have the time or manpower to tackle,” says Ralph Carp, Director of Parks & Public Property, City of Bethlehem. “The Trail Tenders provide an extremely valuable service, and I’m grateful and delighted that they’re showing so much interest in their work on Sand Island.”

With the invasive species removed, the focus will shift to restoring some of the native plants and making other improvements. A \$5,000 Lehigh Valley Greenways Initiative grant will enable the Tenders to begin replanting native vegetation this fall. They will also work to create a trail to highlight the new plants, to install picnic tables, and to create a set of steps to help visitors access the site from the east end.



*A few of the Sand Island Trail Tenders take a moment to catch their breath and gather for a group photo.*

*Photo by Dennis Scholl*

The city is also donating the railroad ties for these steps, and these upgrades will join three resting benches installed by a local Eagle Scout earlier this year.

The work done on Sand Island will have far-reaching benefits, also. As part of what is being called the “Sand Island Model Site,” Tenders have kept records of all the work done on the island. This information will eventually become a “user’s manual,” which other groups can use to replicate the Sand Island success. The D&L secured a \$5,000 matching grant to offset the cost of the user’s manual and some interpretive signage about the work done there and canal history.

The island will also eventually see use as a public site for education. Tenders have constructed a learning center from a fallen tree that city crews removed from the river bank, cut into long pieces, and arranged in a semicircle. Here the public will have an opportunity to visit and learn about native plants. Scholl hopes to one day host classes to teach kids and adults about restoring nature.

Scholl is quick to point out that although the group benefits enormously from the support they receive from the City of Bethlehem, none of their success would be possible without the tireless dedication of the Trail Tenders themselves.

“We are very grateful to our volunteers,” he says. “Without their time and effort, these project initiatives might not have become reality. We have people who have come out every weekend for the whole year— even outside of the dedicated cleanups.

“The Trail Tenders have really evolved,” Scholl adds. “They’ve transformed from a group that picked up trash along the trail to a team that is trying to restore the land along the canal to the way it looked before the canal was built.”

Everyone at the D&L would like to thank the Trail Tenders for their hard work!

## A Trail Tender’s Story

Inevitably, as I’m wrapping up the workweek on Friday afternoon, someone in the office will ask me “So what are you doing this weekend?” My reply is always the same: “Trail Tenders.” I get the same puzzled look every time, followed by “what the heck is a Trail Tender?” I’ll explain the purpose of our mission only to get a barrage of questions: “Isn’t there poison ivy?” Yes, all over the place. “Ticks?” Of course. “Snakes?” Occasionally. “Bugs?” Only in the summer. “Do you get paid?” Nope. And then — “. . . So why do you do it?”

To read Beth Masiado’s complete story, visit [www.delawareandlehigh.org/Beth’s\\_Story](http://www.delawareandlehigh.org/Beth’s_Story), click “Blog” from the menu bar at the top and select the “Trail Tenders” category.”

## Partners and Prospects

As we wrap up another summer, I'm proud to report on the many accomplishments of our partner organizations. A highlight was the recent bridge installation in Dennison Township with the



Anthracite Scenic Trail Alliance. Moving forward, you will see more improvements within the D&L organization and from the outside with additional development activities along the Trail and in our towns.

As we continue to strengthen the foundation of the Corridor, we will be offering new products and services. By year end, we expect to have a membership program in place. Our goal is to extend an invitation to everyone who has been such an important part of our success over the years. I hope you will join us as a *member* of the D&L.

A well balanced development plan will enable us to guarantee continuity for the programs, initiatives, and services we offer the Corridor. More than that, though, this is a chance for our supporters to foster continued progress in our communities, our counties, and our region; it's an opportunity to belong to an organization with a proven ability to get things done.

As we continue to reinforce our organization, I assure you that all adjustments will be positive; the D&L board will retain the same responsibilities, and our commitment to preserving our common heritage will not waver. We are simply creating a new means of partnering with those we serve.

We will share membership details with you in future issues of *Along the Corridor* and look forward to working with you in this exciting new way.

*Allen*

## D&L Homepage Gets Facelift



*The new D&L homepage, designed by Scheffey Integrated Marketing of Lititz*

Traffic to the D&L website has more than doubled since August of 2007. To better serve the nearly 7,200 visitors who stop by the site each week, [www.delawareandlehigh.com](http://www.delawareandlehigh.com) now has a new look.

Vice President of Heritage Programs Elissa Thorne coordinates the website; Cindy Young, Sandy Duda, and Silas Chamberlain are responsible for its upkeep. These day-to-day duties include posting events, adding trail news, updating partner information, and other tasks needed to keep the site fresh and informative even for the most regular visitors.

The design changes—carried out by Scheffey Integrated Marketing of Lititz, Pennsylvania—are more than cosmetic, though. The fifteen rotating images on the new homepage banner actually make the new site easier to navigate. Each photo represents a different aspect of the D&L Corridor, including its “miles of hiking trails,” “quiet waters for fishing,” “historic towns,” and more. Visitors can link from the photos directly to pages with more information. The new design also makes news items, event information, and blog entries more easily accessible, with one-click homepage links directly to each of those categories.

For questions about site listings, or to post an event on the D&L website, contact Cindy Young ([cindy@delawareandlehigh.org](mailto:cindy@delawareandlehigh.org)).

## Walker Evans Photography Exhibit and Events to Highlight St. Michael's Cemetery

The D&L is partnering with the South Bethlehem Historical Society (SBHS) to host a series of events to raise awareness of St. Michael's Cemetery—in particular, its historical significance and urgent need for restoration. St. Michael's land was donated by Asa Packer in 1867 and was the first burial place in the Bethlehem area consecrated for the interment of Catholics. Over twenty-five nationalities are represented there.

Three events in September will focus on the nationally recognized work of photographer Walker Evans, who made a series of photos in the Lehigh Valley during his time with the Farm Security Administration. One of his most acclaimed prints, the iconic, "Graveyards, Houses, and Steel Mill, Bethlehem, Pennsylvania, November 1935," was taken at St. Michael's in South Bethlehem. Twenty-four of Evans' local photos are currently in the Library of Congress FSA-OWI collection (<http://memory.loc.gov/ammem/fsowhome.html>, click "Collection Finder" then "Browse Collection by Time Period," select "1930-1949," and use search terms "Walker Evans Pennsylvania").

We hope you will join us for one or more of these special public events:

### Exhibit of Walker Evans' Prints: September 5-30, 2008

Throughout the month of September, Timezones Global Goodies and Framing Gallery (322 East 3rd Street, South Bethlehem) will host "Walker Evans' Photographs, Pennsylvania, 1935," displaying approximately 20 of Evans' prints created by John T. Hill and Sven Martson. Mark your calendar for September 5; this "First Friday" event from 7:00 – 9:00 p.m. will kick off the exhibit opening and feature D&L Historic Resource Specialist Amey Senape and representatives from the SBHS and Bethlehem Fine Arts Commission.

The SBHS secured funding for this free, public event through D&L's Pennsylvania Heritage Areas Program and the Bethlehem Fine Arts Commission.



Graveyards, Houses, and Steel Mill, Bethlehem, Pennsylvania, November 1935, one of the prints on display at Timezones Global Goodies and Framing Gallery

Photo: John T. Hill, Sven Martson

### South Bethlehem Historical Society Annual Meeting: September 25, 2008

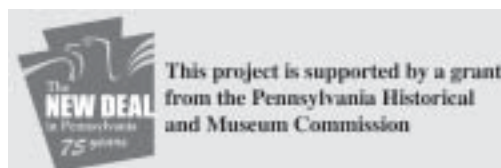
This year, the SBHS annual meeting will also focus on Walker Evans and his work. Activities begin with an informal discussion and tour of St. Michael's Cemetery (led by Ken Raniere of the SBHS), and continue with the annual meeting's keynote speaker, Walker Evans scholar Rodger Kingston. Mr. Kingston will be introduced by Michel Lefevre of the Pennsylvania Historical & Museum Commission (PHMC) and will speak on "Walker Evans in Your Neighborhood." He will discuss who Walker Evans was, what he accom-

plished, and why Bethlehem, Easton, and St. Michael's Cemetery are so important to his career and to American art and photography.

This year's keynote speaker is made possible by a \$1,000 PHMC grant, one of fifteen such awards given in 2008 to celebrate the 75th anniversary of President Franklin D. Roosevelt's "New Deal." This grant was secured through collaboration with the Northampton County Historical and Genealogical Society and the D&L. This free, public event will convene at St. Michael's Cemetery, East 4<sup>th</sup> & State Streets, at 5:00 p.m. on Thursday, September 25, and be followed by the keynote speaker at the Northampton Community College Fowler Family South Side Center, Room 461, in South Bethlehem. Reception at Timezones Gallery will follow. For more information, contact Amey Senape (610-923-3548, [amey@delawareandlehigh.org](mailto:amey@delawareandlehigh.org)).

### Footsteps of Walker Evans Bus Tour: September 27, 2008

Organized by Curt Rowell and scheduled for Saturday, September 27 at 11:00 a.m., the event offers participants a chance to visit some of the sites where Walker Evans made his Lehigh Valley photographs and features commentary from Rodger Kingston. Meet at Route 33/William Penn Highway Park & Ride lot. For cost and information, contact Curt Rowell ([curt@nrinet.com](mailto:curt@nrinet.com), 212-366-7024)



## Artisan Trail Studio Tour Weekend

The D&L Artisan Trail Studio Tour Weekend has been scheduled for Saturday and Sunday, October 18<sup>th</sup> and 19<sup>th</sup>. During this free event, more than 20 participating artists will open their studios to guests; several of these artisans have donated pieces to be raffled during the weekend.

“The studio tour leads through a number of museums, galleries, and other artistic and cultural hotspots representative of the current renaissance in the Pocono Mountains,” said Pocono Mountains Visitors Bureau President and CEO, Carl Wilgus. “Artisan Trail explorers will discover the rich history of the Pocono Mountains and Lehigh Valley, including traditional artwork inspired by the Lenni Lenape Indians who hunted the region in the early 17th century, museums filled with artifacts from the original townships of the area, and modern blown-glass sculptures. Visitors will discover folkways of the past and artists of the future as they chat with Pennsylvania artisans during their journey.”

The Artisan Trail, a joint initiative of the D&L National Heritage Corridor, Lehigh Valley Convention and Visitors Bureau,



Join us for the Artisan Trail Studio Tour Weekend, October 18 - 19

Pocono Arts Council, Pocono Mountains Visitors Bureau, and the Pennsylvania Department of Community and Economic Development, was launched in 2007 with 25 featured art galleries, museums, and private studios. Today it is one of five such trails in Pennsylvania developed to bring attention to the Commonwealth's unique spectrum of art venues.

“The D&L Artisan Trail initiative is a great way for lovers of art to discover the talent of artists in eastern Pennsylvania,” says Lehigh Valley Convention and Visitors Bureau Director of Public Relations, Tracey Werner. “The trail brochure helps visitors and residents alike navigate the trail from Lehigh Valley to Jim Thorpe and the Poconos as they

visit with artists in their studios and see exhibits at local galleries and museums. The Lehigh Valley Convention and Visitors Bureau is proud to support this program.”

To visit the D&L Artisan Trail online, point your browser to [www.delawareandlehigh.org/artisan](http://www.delawareandlehigh.org/artisan). From the website, you can view photographs and read descriptions of participating sites. Visitors can also create maps of specific trail locations, complete with driving instructions.

## Northampton Community College to Host “Update” Series

This fall, Northampton Community College will once again host its popular “Update” presentation series. For 30 years, this program has been drawing participants ages 55 and over to its weekly events.

For ten Wednesdays between September 17 and November 26, the Main Campus in Bethlehem Township will host discussions on a wide range of topics. Several of these will focus on D&L-related issues:

### September 24 –

Ken Ranieri – History of St. Michael’s Cemetery & South Bethlehem, 9:30 a.m.–10:45 a.m.

Amey Senape – Restoration of St. Michael’s Cemetery, 10:45 a.m.–12:00 Noon

### October 15 –

Allen Sachse – D&L National Heritage Corridor progress, 9:30 a.m.–10:45 a.m.

Dennis Scholl – Tending the D&L Trail, 10:45 a.m.–12:00 Noon

The \$39.00 course fee covers all 10 sessions, and enrollment is open to anyone over age 55. Participants may also attend an end-of-semester luncheon at the college’s award-winning *Hampton Winds* restaurant (cost is an additional \$15.00 per person).

For more information, contact Northampton Community College Program Manager Elaine Schadler (610-861-4108). To register online visit [www.northampton.edu](http://www.northampton.edu), select “Search Courses” under the “Business/Community” menu and enter “update” in the “Keyword Search” field. You may also register toll-free by phone (877-543-0998), or in person at the records office on the Main Campus in Bethlehem Township.

## Exciting news on the D & L Trail!

A great deal is happening with construction of the D & L Trail. In **Luzerne County**, the “recycled” bridge has been completed, and the dedication was held on August 22 (look for details in an upcoming issue). This bridge installation adds another 6.5 miles of continuous D & L Trail adjacent to the Lehigh Gorge State Park.

The streetscape project in White Haven has also been completed. These are the first in a series of several projects related to continuation of the trail northward to the eventual trail terminus in Wilkes-Barre.

**Carbon County** is also the site of a number of projects. In Jim Thorpe, the county is hard at work acquiring an easement through privately held land adjacent to the Nesquehoning trestle. This section of trail—slated for completion in the spring of 2009—will connect Lehigh Gorge State Park with downtown Jim Thorpe.

Work is also underway on the Weissport trailhead and trail surfacing project. This effort consists of a major upgrade to the trailhead (including the construction of a pavilion) and trail-surface improvements.



*D&L Chairwoman Judy Borger introduces U.S. Representative Paul Kanjorski, \_\_\_\_\_, \_\_\_\_\_, and D&L President Allen Sachse during the bridge dedication ceremony.*  
Photo: \_\_\_\_\_

Elsewhere in Carbon County, East Penn Township has continued to improve the D & L Trail within its boundaries; a three-mile section of trail is scheduled to be surfaced in 2009.

In **Lehigh County**, work is progressing on the trailhead and trail project in the Lehigh Gap Nature Center area. When finished in the fall of 2009, the northern portion of the D & L Trail in Lehigh County will be complete to the Carbon County line. This project, along with the surfacing of the East Penn Township section, will provide a beautiful five-mile section of trail between the Slatington and East Penn Township trailheads.

Lehigh County has also made significant progress in clearing the remaining private-property hurdles from Slatington into Whitehall Township. As soon as these issues are resolved, this scenic trail section will be open to the public.

Finally, the D&L is currently working with the Borough of Freemansburg in **Northampton County** to resolve their deed issue. We hope to send this section of trail construction out to bid in the spring of 2009. As part of this project, the Palmer Trail will connect to the D & L Trail; the D & L, in turn, will cross the Lehigh River into Hugh Moore Park in Easton.

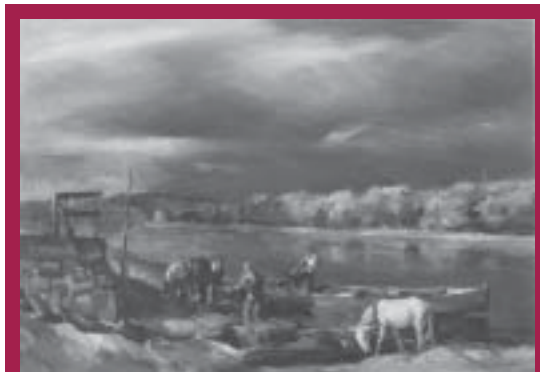
## Art and the River

Celebrate waterway-inspired art; say goodbye to Michener New Hope gallery

The James A. Michener Art Museum in New Hope is currently celebrating the influence of Bucks County’s waterways—in particular, the Delaware River and the Delaware Canal—on artists past and present. “Art and the River,” which the D&L is sponsoring through a \$15,000 grant received from the DCNR’s Pennsylvania Heritage Area Program, contains more than 50 works from nearly 40 artists.

In conjunction with this exhibition, the Museum also offered a special lecture entitled “A Living Landscape . . . Where America was Built,” presented by D&L Vice President of Heritage Programs, Elissa Thorne. Forty registrants attended the lecture and enjoyed a special opening and curator’s tour.

The exhibit wrap-up on October 5 will come just a few months before the museum itself closes its doors in February of 2009.



*John Folsinsbee’s Storm Light, from the “Art and the River” exhibit. Courtesy of the Reading Public Museum, Reading, Pennsylvania.*

“Although a permanent venue in New Hope proved unfortunately not to be viable, the Michener Art Museum’s involvement with the community of New Hope will remain as unshakeable as before,” said the museum’s Associate Curator of Exhibitions, Erika Jaeger-Smith. “Our relationship with the artists—both historic and contemporary—who chose to depict the landscapes bordering the river and canal, with the collectors whose generosity enhances our exhibits, and our many collaborations with the arts organizations and businesses in the New Hope area ensure that a permanent bond, forged long before our satellite opened, will continue as strongly as ever.”

For additional information about the exhibit, contact the museum’s Doylestown location: (215) 340-9800.

Delaware & Lehigh National Heritage Corridor, Inc.  
2750 Hugh Moore Park Road  
Easton, PA 18042

PRSR STD  
US POSTAGE  
PAID  
PERMIT NO. 550  
ALLENTOWN, PA

The Delaware & Lehigh National Heritage Corridor and State Heritage Park is a joint effort of private groups and interested citizens, county and municipal governments, the Commonwealth of Pennsylvania and the federal government to conserve cultural and natural resources and provide appropriate development opportunities for a sustainable future.

Future issues of *Along the Corridor* will be available online and via email. If you would prefer to receive the newsletter electronically, please write to the above address or send your email to [info@delawareandlehigh.org](mailto:info@delawareandlehigh.org).

[www.delawareandlehigh.org](http://www.delawareandlehigh.org)



## D&L, Inc. Staff

To email D&L staff members, use  
[firstname@delawareandlehigh.org](mailto:firstname@delawareandlehigh.org)

Easton Office: 610-923-3548

C. Allen Sachse; *President and Executive Director*  
Elissa G. Thorne; *Vice President, Heritage Programs*  
Scott Everett; *Stewardship and Trail Manager*  
Rayne R. Schnabel; *Director of Advancement and Administration*

Sherry L. Acevedo; *Conservation Resource Specialist*

Steve Adams; *Accounting Manager*

Donna Boone; *Regional Coordinator, Landmark Towns of Bucks County*

Amey Senape; *Heritage Interpretation & Preservation Specialist*

Dennis Scholl; *Outreach Coordinator*

Cindy Young; *Project Assistant*

Silas Chamberlin; *Intern*

Lehigh Office: 610-377-4063

Sandy Duda; *Administrative Assistant*

Dale Freudenberger; *Heritage Project Manager*

### Newsletter:

Matt Cordes; *Writer/editor;*

[matt@evergreencopywriting.com](mailto:matt@evergreencopywriting.com)

Elaine Crooks; *Designer;* [bewords@comcast.net](mailto:bewords@comcast.net)

## UPCOMING EVENTS

**September:** (all month) Walker Evans Photo Exhibit (free), Timezones Global Goodies & Framing Gallery, E. Third St., Bethlehem, 610-866-8463

**September 13:** The Great Delaware Canal Chase, Bristol, Driving event through Bristol, Morrisville, New Hope, and Yardley with prizes awarded  
[www.delawareandlehigh.org/site.asp?siteid=843](http://www.delawareandlehigh.org/site.asp?siteid=843), 215-781-2605

**September 13:** Great Slatington Duck Race, Trout Creek at the covered bridge along the Slate Heritage Trail, Slatington. 3:00–9:00 p.m.

**September 20:** Bluegrass & Anthracite Heritage Festival, Mauch Chunk Lake Park. [www.mclpark.com](http://www.mclpark.com), 570-325-3669

**September 20:** D&L Trail Tender Volunteer Picnic, 610-923-3548, ext. 221 or 225

**September 20:** Bristol Borough Doo Wop Festival, Riverfront at Mill Street parking lot 5:00 p.m.–dusk, 215-785-4501

**September 27 & 28:** New Hope Outdoor Arts & Crafts Festival, N. Main and E. Parry Streets in New Hope, [www.NewHopeChamber.com](http://www.NewHopeChamber.com), 215-862-9990

**September 27:** Yardley Harvest Day, Yardley 9:00 a.m.–4:00 p.m., [www.delawareandlehigh.org/site.asp?siteid=32](http://www.delawareandlehigh.org/site.asp?siteid=32)

**September 27:** Footsteps of Walker Evans Trolley Tour, 11:00 a.m., visit Evans sites in Easton and Bethlehem; commentary by Rodger Kingston, 212-366-7024

**September 27:** Northern Lehigh Arts Fest, Main Street, Slatington, 10:00 a.m.–4:00 p.m., free admission, 610-760-2488

**September 28:** 3<sup>rd</sup> Annual Mauch Chunk Victorian House Tour, Jim Thorpe, 1:00–5:00 p.m., [www.mauchchunkhistory.com](http://www.mauchchunkhistory.com), 570-325-4439

**October 4:** The Gathering along the Slate Heritage Trail, Covered Bridge in Slatington. 11:00 a.m.–?, free admission

**October 18 & 19:** D&L Artisan Trail Studio Tour Weekend, 11:00 a.m.–6:00 p.m., free admission, [www.delawareandlehigh.org/artisan](http://www.delawareandlehigh.org/artisan)

**October 19:** Walnutport Canal Festival, Lehigh & Canal Streets, Walnutport, Noon–6:00 p.m., 610-760-9906

**October 29:** Creating Sustainable Community Parks Conference, [www.dcnr.state.pa.us/cscp08](http://www.dcnr.state.pa.us/cscp08), 610-923-3548, ext 226