



# ALONG THE CORRIDOR

A NEWSLETTER OF THE DELAWARE & LEHIGH NATIONAL & STATE HERITAGE CORRIDOR

## Revitalization Enriches New Hope for Visitors & Residents

by Elissa G. Marsden

How do you enhance an authentic heritage tourism attraction while increasing quality of life for residents? When you are a tiny Bucks County town of 2,300 residents, already receiving nearly a million visitors annually, a delicate challenge awaits.

Because New Hope is a distinctive hamlet on the Delaware, its picturesque setting has long attracted artists, musicians and writers. It's been a popular visitor destination since the mid-20<sup>th</sup> century when it became a stop for Broadway bound plays. Visitors attracted to this diverse riverfront community sustain boutiques, high quality art galleries, restaurants and inns.

The record is clear... tourism can have negative side effects. But... under the thoughtful leadership of Borough Council Vice-President Sharyn Keiser, a dedicated group has spearheaded New Hope's revitalization.

Keiser explained, "New Hope's Revitalization Committee includes residents, businesspeople and civic leaders. Emphasis has been placed on strategies to enhance both the residential and visitor experience. We have been fortunate with the number and quality of local partnerships."

Beginning in 2000, a variety of events set the stage and led to the excitement that prevails in New Hope today. The Borough received a \$333,000 HUD grant to help create additional parking on Borough-owned land adjacent to the Canal. At the same time, tenacious developer George Michael secured the nearby former Union Camp paper mill site. Michael went to task and selectively restored and adapted the space for retail and offices. The Borough retained Rob Loughery of the Keystone Heritage Group as its development facilitator. In turn, he requested support from the D&L Commission.

The following year, Borough and developer succeeded in attracting the Michener Art Museum to a portion of Union Square for a new Museum satellite. Michener has long wanted a presence in New Hope and plans to move the "Creative Bucks County" exhibit from Doylestown.

The Michener development package includes rent-free space. Additional financial support came through private fundraising, as well as from local legislators US Cong. James Greenwood, PA Senator Joe Conti, PA Rep. Chuck McIlhinney and the Delaware River Port Authority.

*New Hope partners celebrate the opening of the new "Back Door" parking lot adjacent to the Union Square development.*



Photos courtesy of Gilmore & Associates, Inc.

New Hope is a near perfect location to expend federal Transportation Enhancement funds. Within just a couple of town blocks, several different modes of transportation come together: rail, canal, auto, hiking & biking trail, and boating. In a matter of just two years a number of improvements have been addressed:

- ❖ The overflow parking lot has been constructed using environmentally friendly best practices, developed through the Heritage Conservancy's Municipal Assistance for Conservation program;
- ❖ The long awaited "Back Door" onto Route 202 is in place;
- ❖ Engineering and planning by Gilmore & Associates for the Cultural Canal Walk is well underway since the Borough was awarded at \$316,000 TE grant;
- ❖ A second Transportation Enhancement grant of \$1,113,000 was awarded to the D&L in partnership with the Delaware Canal Improvement Corporation in order to restore Lock #11 adjacent to the Friends of the Delaware Canal headquarters;

*(continued on page 2)*



## Join the PA Greenway Sojourn

July 19-25, 2003

The Pennsylvania Greenway Sojourn is returning to the D&L Corridor. It will travel the D & H Rail-Trail from Waymart through Scranton, and the D&L Trail from White Haven to Washington Crossing State Park.

This is an off-road, six-day, leisurely tour with four 30-mile biking days, one 10-mile raft trip and a day-long special railroad excursion. Using rail-trails, canal towpaths, the Lehigh River and a passenger train, participants will travel 170 miles from northeastern PA near New York State to Washington Crossing Historic Park on the Delaware, north of Philadelphia.

The Pennsylvania Rails-to-Trails Council is organizing the 6-day Sojourn. It's geared to adults in average condition and their children who seek an attainable challenge on a leisurely yet safe tour of the Pennsylvania countryside.

Each night, participants camp at beautiful sites that offer educational, historical and recreational activities for the family. Sixteen meals, six overnight sites and tour fees are included in the price of \$350/person. (A three-day rate is also available). Camping gear is transported ahead to each campsite. Return bus travel from the end point to the start is included. Bicycle rentals are available but extra.

This is a great opportunity to experience the wonders of the Delaware & Lehigh Corridor, up close and personal! Registration information is available on the Rails-to-Trails Conservancy websites: [www.railtrails.org/pa](http://www.railtrails.org/pa) or [rtcofpa@transact.org](mailto:rtcofpa@transact.org).

## Miles of Colorful Mules – Out and About

by Rayne Berger Schnabel

The Mule Team has lassoed its last sponsor and managed to corral a stampede of the fiberglass critters. The only thing left to do is brand them, so by the end of June, each of nearly 200 mules will have a plaque to identify it.

This is one art exhibit you don't need to dress up to visit. In fact, you best wear walking shoes! Mules are showing up around Lambertville, New Hope, Doylestown, Allentown, Bethlehem, Easton, Wilkes-Barre and Scranton. In addition, some have jumped the fence and made their way to Palmerton and Jim Thorpe. Local newspapers report mule sightings on a weekly basis.

As expected, you are in for a treat because these mules are not just brown and white. They're orange, purple, green and every other color of the rainbow. They're decked out in tile, coins, fine artistry and even bottle caps. Talent from throughout the D&L is evident – from school children to the renown, each piece of art will amaze.

The D&L mascot, Mule-gellan, is working on a navigational map. A Mule-finder map will be widely distributed in June, as well as posted on our website, [www.milesofmules.org](http://www.milesofmules.org). Check out the website frequently for map updates, events and mule sightings.

Each sponsor and artist deserves a huge thank you for bringing about this exciting and invigorating public art project to honor our unique culture. The Team has been working *like mules* for almost two years to bring this project together. It's hard to imagine the swell of support this project has received, not to mention the creativity.

Get out... *trot around the Corridor* this summer... see each and every one. And don't do it alone, take along friends and family. Explore Miles of Mules, *History with a Colorful Kick*.

## New Hope (continued from front page)

- ❖ Improvements to the restrooms and visitor amenities at the New Hope Visitor Information Center were completed and celebrated this spring; and
- ❖ A plan and installation strategy for a comprehensive directional signage in the Borough is in development

Both residents and visitors are the beneficiaries of New Hope's revitalization because...

- ❖ Additional convenient parking and an alternate exit near the Borough's most popular entry point will get cars off New Hope's narrow streets more swiftly;
- ❖ The Cultural Canal Walk, better directional signage in the Borough and interpretive panels will help disperse the thousands of tourists who stroll New Hope's cramped sidewalks.
- ❖ Walkers will have the choice to walk or bike the Delaware Canal Towpath and Cultural Walk or travel the already popular downtown sidewalks;
- ❖ The new exhibits offered by the Michener will help maintain visitorship;
- ❖ The restoration of Lock #11 will improve the integrity of a National Historic Landmark that is in close proximity to a local population center;
- ❖ High quality goods offered at Union Square in outlets such as the Mercer Museum Shop supports the communities intense interest in the arts; and
- ❖ Improved public amenities for visitors will reduce the number of conflicts between visitors and residents.

## Focus on the Market Towns . . .

### Partnerships Spell Success In Slatington

by Dale Freudenberger

The communities with the most successful Market Towns revitalization efforts will be those that forge strong partnerships to reach community goals and have hard-working local volunteers. Nowhere is this more evident than in Slatington in northern Lehigh County.

Here, a local visioning group, civic organizations, individual volunteers, municipal, regional and state government work together with the Corridor Market Towns (CMT) Initiative to address issues important to the future of Slatington and the surrounding area.

Prior to the Market Towns Initiative, Northern Lehigh residents – from Slatington, Walnutport, and Washington Township – successfully partnered to develop a ten-year vision plan called Northern Lehigh Future Focus (NLFF). Future Focus' visioning effort is made up of three task forces: Downtown Revitalization & Economic Development, Historic Preservation & Tourism, and Health & Community Services. The Market Towns Office continues to assist NLFF with community workshops, public relations and other visioning exercises.

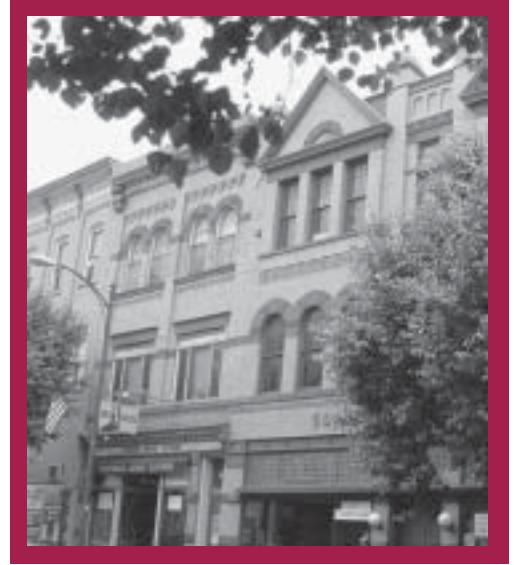
The loss of the landmark Slatington High School, with its signature owls overlooking the grounds, to ravages of time, neglect and the wrecking ball, served as a wake up call for residents. Now vacant, the beloved site is located in the heart of downtown on Main Street. The site has become the focus of a major re-use plan that includes the salvaged owls.

In 2001, the CMT Initiative was able to jumpstart the school site project a \$5,000 Municipal Assistance for Conservation grant. The Heritage Conservancy helped create a community concept plan for the park. It also recommended establishing an historic district to prevent future losses. The Downtown Revitalization Task Force is well on its way to making the site a focal point again – this time as a beautiful public space. The park will reflect the Victorian style and slate industry heritage that prevails in Slatington.

In Fall 2002, the School Site Committee conducted a workshop to gather additional input on the proposed park. Their recommendations were presented to Slatington Borough Council. With the assistance of PA Rep. Julie Harhart and PA Sen. James Rhoades, a \$10,000 Community Revitalization Grant was secured to survey and develop a master plan.

Borough Manager John Kasten noted, "It's rare in this day and age to have such a strong partnership. Without the D&L, it would have been easy for other municipal priorities to take precedent."

Just below the future park site, the Route 873 bridge is slated for replacement in the next year or two. Again, working with the Borough and Downtown Task Force, the Market Towns Office was able to persuade PennDOT of the importance of a complimentary new bridge design. Vehicular and pedestrian traffic will traverse the top of the bridge daily, and the new Slate Heritage Trail along the Trout Creek will pass beneath it. The



design of the top of the bridge will impact the surrounding neighborhood and the view below will impact trail users. The revamped bridge design includes supporting abutments to resemble the stone foundations of the current bridge, lighting reminiscent of the original downtown street lamps, and ornate sidewalk railings.

Partnering with the Downtown & Economic Development Task Force, the Lehigh County Economic Development Corp., Citizen's National Bank, the Borough and local property owners, the Market Towns Office will be able to provide matching façade renovation grants, design assistance and low interest loans to downtown commercial properties. Three projects are expected to get underway in 2003 to enhance the architecture and appearance of Citizen's Easy Bank, the Seibert Building, and Northern Lehigh Sporting Goods. More prospects are on a waiting list.

Adequate parking is a concern in all the Market Towns. Again working with the Downtown Task Force, the Market Towns Office completed an assessment, map and list of recommendations for improving downtown parking. The Borough is now beginning to institute these recommendations with the Downtown Task Force.

The proposed Slatington National Historic District will recognize the important role history and architecture play. It is raising awareness among citizens and potential investors about community assets and opportunities. It promotes historic preservation and encourages reinvestment in Slatington's commercial buildings. The Market Towns office through grant writing, fund-raising and consultant selection assists this process. A \$10,000 matching grant was secured from Pennsylvania Historical & Museum Commission towards preparing the nomination to the National Register. In addition, a series of Northern Lehigh walking and driving tour brochures are under development.

The strength of partnerships is key to the success of the Market Towns revitalization effort. Tangible evidence will begin to appear this summer. In the meantime, please visit the new Market Towns website: [www.markettowns.net](http://www.markettowns.net).



## Nesquehoning Trestle and Beyond by Isidore "Bill" Mineo

*Dead Railroad Bridge...the Schuylkill Cut-off...* just a couple of the names given by local residents to the two bridges used by the former Lehigh Valley Railroad to cross the Lehigh River above Jim Thorpe. The Department of Conservation and Natural Resources (DCNR) acquired the spans after the railroads abandoned them. Hardly *dead* in the minds of local trail users, the bridges are a vital link between Jim Thorpe and the Lehigh Gorge.

Major efforts are underway to restore rail use on the trestle by Reading, Blue Mountain, & Northern Railroad and to use it as part of the D&L Trail. Rail upgrades will be partially funded by a Commonwealth Capital Grant, while trail construction, per DCNR design, will be reimbursed up to \$800,000 by TEA-21 awards – one of which was secured by the D&L Commission. The Carbon County Board of Commissioners endorses both projects.

When complete, the Nesquehoning Trestle will accommodate a *Rail with Trail*. The rail portion re-establishes a key link to the rail network that once transported Anthracite from mine to market, as well as other freight and passenger service. The trestle's trail portion will connect the Lehigh Gorge Trail to a new trail linkage through Carbon County communities, including Jim Thorpe's Historic District and the Old Mauch Chunk Landing. Best of all, it will take bicyclists off the current hazardous route along Coalport Road and Route 903.

Recently, D&L Trail Tender volunteers joined State Park staff to clear a path from the east side of Trestle to an area near Coalport Road. Impressive remains of a railroad turntable were exposed. Additional trails and interpretive signage are planned.

Look downriver to Lehighon and you will see a connection with D&L Rail Trail (now acquired and under design) and the continuation south to Cementon in Lehigh County. This Rail Trail along the west bank of the Lehigh River parallels and interconnects with the D&L Towpath Trail along the Lehigh Canal, and eventually links to the Delaware Canal Towpath Trail from Easton to Bristol.

Looking north, design of the first phase of the D&L Trail from Lehigh Gorge State Park, through the Borough of White Haven, Port Jenkins, and Glen Summit, has begun with the selection of Pennoni Engineers as consultant. White Haven already has a community based trail concept plan to guide them.

Both D&L Trails connect to the Appalachian Trail at Lehigh Gap (near Palmerton), to the proposed Lehigh River Water Trail, and to other side trails into communities along the way.

## Meet Cynthia Campbell D&L Alternate Commissioner

Cindy Campbell serves as an Alternate Commissioner to the D&L Commission from the Pennsylvania Department of Community & Economic Development (DCED). She began attending D&L meetings in place of Mickey Rowley in 2000.

According to Cindy she got involved because "Allen's enthusiasm for the Corridor was contagious. Personally, I'm very interested in the story of our Rivers. They molded our towns and people, and provide recreational and educational opportunities. The Corridor offers a refreshed community vision, promotes economic development, while sustaining the natural areas and open space."

When pressed to name her "pet" D&L project, it shouldn't surprise anyone that Cindy named the Corridor's unofficial mascot. "I have to say I like the Miles for Mules project. It's unique enough that it interests me. Mules played such an important role in the canal days, it is a good tribute to their hard work."

DCED has been a funding partner in several D&L projects at both the local and Corridor wide level. Her presence helps her agency stay abreast of D&L activities and helps the D&L staff keep a finger on the pulse of DCED programs for local partners.

Cindy started at the PA Department of Community Affairs in 1975 – right out of high school – in a clerical position. Now known as DCED, she is a seasoned veteran there. She attended the "school of hard knocks" and after three promotions is now an Economic Development Analyst. "I love what I do. I love the people and groups I work with."

She and her husband, Todd, have two children, Chris (19) and Ryan (9). Cindy also serves on the Board of Directors of the Lackawanna River Corridor Association, a non-profit group working towards the beautification of the Lackawanna River and its watershed. She serves as Vice Chairperson of the Northeast Section of the PA Planning Association.

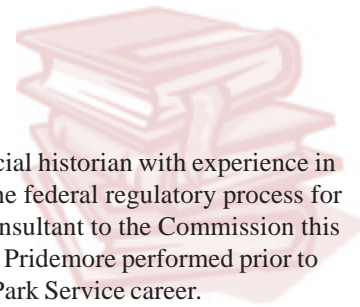


## Welcome Doug!

Doug Reynolds, an industrial and social historian with experience in interpretation, research, publishing, and the federal regulatory process for historic properties, began working as a consultant to the Commission this winter. He assumes some of the duties Sue Pridemore performed prior to leaving the D&L to advance her National Park Service career.

Doug will assist on some ongoing projects including the Market Towns and interpretive signage. His expertise with the National Register of Historic Places process and Commonwealth preservation programs are key to heritage development initiatives. In addition, he is evaluating the Glen Alden Coal Company records at the Earth Conservancy in Luzerne County.

Doug was staff historian at the Blackstone River Valley National Heritage Corridor from its inception and planning stages in 1985-1993. He worked at the Pennsylvania Historical and Museum Commission's Bureau for Historic Preservation from 1993 to 2002.





## UPDATE

by Sherry Acevedo

It's springtime so it's time to get outdoors and enjoy local parks, open space, greenways, and trails. On March 11, the D&L held its first Trail Tenders Workshop. John Hanosek, Lehighon Borough Manager, hosted us at the former Lehighon Junior High School. This was the first public forum held at the local landmark that is in the process of being renovated.

The Workshop enlisted new Trail Tender groups and provided an opportunity for existing group coordinators to share Tender stories. A presentation was given to highlight Tender accomplishments, so there was much discussion and lively interaction. Great strides have been made along the Trail, but new and exciting challenges lie ahead. As we acquire, plan, and build new trails, more local help is needed. There are trail surface improvements along all sections of the D & L Trail ongoing. As a result of feedback received, quarterly training sessions at different sites throughout the Corridor will be held.

Regional Trail Tender organizations are forming all along the 165-miles of the D&L to work cooperatively with other established groups. To achieve uniform performance, staff is working to define these regions and structure Tender groups for both the Lehigh and Delaware Rivers regions. The D&L Tenders are part of a bigger "team" effort, and represent multiple groups and individuals along the D & L Trail.

Additional Trail Tender Groups & Regional Coordinators are needed for:

- ✓ Delaware Canal – all sections along the 60-mile towpath & State Park
- ✓ City of Easton – Delaware River, Bushkill Creek, Lehigh River, Hugh Moore Park
- ✓ Lehigh County ROW acquisition – Cementon to Lehigh Gap
- ✓ Slatington – Slate Heritage Trail (spur trail)
- ✓ Carbon County ROW acquisition – Lehighon, Jim Thorpe, Bowmanstown
- ✓ Luzerne County ROW acquisition - White Haven, Port Jenkins, Mountain Top

## What do Trail Tenders Do?

**Cleanups** – general litter pickup on the river, trail, and canal, island cleanups

**Trail Environment** – inspect & clean signage, maintain support structures, enhance trail environment with native plantings

**Special Projects** – stabilization workdays, host special events, research & gather historical information, Weed Warrior – invasive plant inventory & management

**Outreach** – volunteer trail patrol, trail etiquette demonstration clinics, distribute regional information, perform trail assessments

**Coming up...** a new *Weed Warrior* program will identify, remove, and monitor invasive plant species that are prevalent throughout the Corridor. These areas will be re-vegetated with native plants and warm season grasses. The next **D&L Tender Workshop on Saturday, July 12, 2003 will focus on** how to identify and remove invasive species that is prevalent in the Corridor. Please contact Sherry at (610) 923-3548 or [dele.sherry@verizon.net](mailto:dele.sherry@verizon.net) for location and time.

## Staff Profile

### Sherry L. Acevedo

Sherry (Petrilak) Acevedo is no stranger to D&L Trail advocates so it's a pleasure to announce she is now a full-time member of the D&L team. She began her duties as Trails Specialist in September 2002.



Little time was wasted in getting Sherry to work on the D&L Trail system, including rail-trails, canal towpath, and water trails. Her position insures the system and its linkages are promoted, usable, and safe. In her own words, "I manage the D&L Trail Tenders Program, ensuring that trails are maintained, enhanced, and sustained in a high quality manner for the recreation, enjoyment, and education of the public. Our intent is to establish a uniform Trail Tender organization up and down the Corridor, without losing regional identity." Trails manuals will be developed specific to each region.

Sherry earned a B.S. in Recreation and Leisure Services Management from East Stroudsburg University in 1996. That summer she completed an internship at Fort Carson, Colorado, for the U.S. Army Morale, Welfare, and Recreation branch. As one of six interns selected from across the country, Sherry led high adventure outdoor recreation programs for the military and their families earning certification as a whitewater rafting guide on the Arkansas River. She also led mountain bike tours, rock climbing, canoeing, fishing, and hiking adventures up Colorado's famed "14ers" – 14,000+ ft. mountain peaks.

While employed by the Emmaus-based Wildlands Conservancy, she helped create the volunteer D&L Trail Tenders Program, under a contract with the D&L. She initiated various cleanups and projects throughout the Corridor. In addition, she was responsible for drafting the Lehigh River Water Trail to identify and assess future public access. She also facilitated cleanups and trail assessments on Wildlands nature preserves at South Mountain, Bueler, and Burkhart.

On June 22, 2002, Sherry Petrilak married Alex Acevedo. The newlyweds live in Wind Gap, just 2 blocks from Wind Gap Park with their two cats and a dog. Trail Tending runs in the family. Sherry's parents have helped on several stabilization projects in the Lehigh Gorge.

Sherry loves her job. "As you can imagine, I have many special memories of my time on Colorado's 14ers, but presenting the Trail Tenders program at the 2001 National Trail Symposium in California and becoming a part of the D&L team are among the most memorable."

Delaware & Lehigh National Heritage Corridor Commission  
1 South 3rd Street, 8th Floor  
Easton, PA 18042

PRSR STD  
US POSTAGE  
**PAID**  
PERMIT NO. 550  
ALLENTOWN, PA

The Delaware & Lehigh National Heritage Corridor and State Heritage Park is a joint effort of private groups and interested citizens, county and municipal governments, the Commonwealth of Pennsylvania and the federal government to conserve cultural and natural resources and provide appropriate development opportunities for a sustainable future.

For further information, to be added to the mailing list, or to correct your address, please write to the above address or call 610-923-3548.

[www.delawareandlehigh.org](http://www.delawareandlehigh.org)



A Federal, State, and Local Partnership

**The Commission's staff includes:**

C. Allen Sachse  
*Executive Director*

Denise G. Holub  
*Chief Financial Officer/Grants Administrator*

Isidore "Bill" Mineo  
*Stewardship and Trail Manager*

Sherry L. Acevedo  
*Trail Specialist*

Elissa G. Marsden  
*Heritage Development Specialist*

Dale Freudenberger  
*Corridor Market Towns Manager*

Doug Reynolds (consultant)  
*Historic Program Manager*

Rayne Berger Schnabel  
*Executive Secretary*

Diana Rollar, *Administrative Assistant*

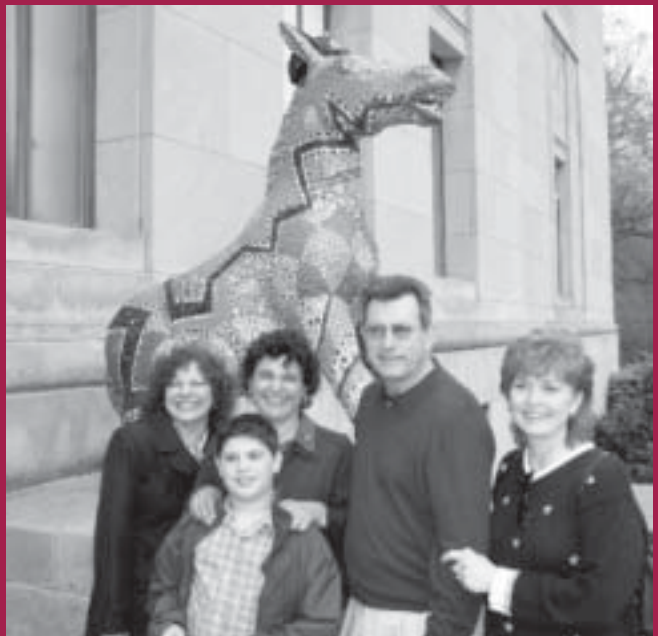
Alyssa Vazquez, *Office Assistant*

*Newsletter Editing & Design:*

Elissa G. Marsden

Elaine Crooks, Beyond Words, Solebury, PA

**Rayne Schnabel, Elissa & Jay Marsden, and Allen & Debby Sachse attended the roll-out of mules at Scranton's Everhart Museum.**



**"Pop Jones", sponsored by Allen Sachse to honor his late father, a Lackawanna County farmer, was featured. Artist Jill Elizabeth created Pop with the memory of her grandfather in mind. He was a muleskinner in Scranton's anthracite mines. Several volunteers (including Marsden and her son) helped encrust Pop with ceramic tiles, mirrors, dominoes, gemstones and anthracite. He will be displayed at the Jim Thorpe Train Station June through October.**