



# ALONG THE CORRIDOR

A NEWSLETTER OF THE DELAWARE & LEHIGH NATIONAL & STATE HERITAGE CORRIDOR

## A Lock by any Other Name...

This autumn, a canal boat will enter a Delaware Canal lock for the first time in decades. It's a dream come true for all of those fascinated by canals.

"Every canaller's dream is to have their lock restored," says Susan Taylor, Executive Director of the non-profit Friends of the Delaware Canal. "It's story of all the stars coming into alignment."

Susan gazes out her office window in the New Hope Lockhouse, which overlooks the lucky Lock #11. It will be restored to its original operating condition by November – thanks to the efforts of many partners.

Federal Transportation grant dollars, ongoing community revitalization in New Hope, and a strong cooperative spirit were key in making the project happen. Partners including the Borough, the D&L, the Friends of the Delaware Canal, the Bureau of State Parks and the Historic Delaware Canal Improvement Corporation lobbied to fund the lock restoration, and their efforts equaled funding success.

Loftus Construction started work on the lock this February, and dredging of the canal was complete by April. With the arrival of spring, Susan has been watching the crew clean out the old chamber and the walls of the lock.

In 1852, Lock #11 was changed from a single lock to a double lock that could accommodate two canal boats at a time. The new lock will utilize the same gate configuration as the 1852 lock – a drop gate on the northern end and two miter gates on the southern end.



*Taking a much altered, deteriorating lock structure and making it operational once again is no simple task. The dredging of Lock #11 in New Hope this Spring involved bulldozing the silt into an excavator. The material is then hauled by truck to the quarry in Tinicum Township that was purchased by the Bureau of State Parks last year.*

Photo courtesy of Friends of the Delaware Canal.

The new wooden drop gate will be operated by gears and water pressure. Recently, the construction crew poured the concrete for the wicket chamber, says Susan. The wickets are the openings under the gate that allow a controlled amount of water to pass through the lock.

You're invited to visit Lock #11 during its transformation, and to join the celebration of its complete restoration in the fall. For more information, visit the Friends' website at [www.fodc.org](http://www.fodc.org) or DCNR website at [www.dcnr.state.pa.us/stateparks/parks/delawarecanal.aspx](http://www.dcnr.state.pa.us/stateparks/parks/delawarecanal.aspx). The Lockhouse is located at 145 South Main Street, New Hope, PA.

*Available Summer 2004*

## Stone Coal Way A 152-page heritage traveler guide

It's a well-worn story every kid hears in history class. Some unsuspecting soul strolls through an untouched plot of land, looks down and accidentally discovers: A) gold; B) silver; C) oil; D) some other valuable product born under the earth's surface. Riches follow, as do commerce and development, and the land is forever changed. This is the well-worn plot that started it all for the D&L Heritage Corridor.

Our new 152-page heritage traveler guide called *Stone Coal Way* offers a glimpse at how something as simple as the discovery of coal can influence the evolution of a people and geography. This book navigates the D&L through trails, towns and culture that evolved since Phillip Ginder first discovered anthracite (stone) coal in Summit Hill 213 years ago.

Its three sections represent three distinctly unique worlds, from mountain to market. Terrain, towns and people change before your eyes, each displaying a different character, with one trail binding it all together. Color photos of present-day vistas and historic scenes communicate the unique blend of resources that is the Delaware and Lehigh National Heritage Corridor and State Heritage Park.

A very useful part of *Stone Coal Way* is a "best of" list of communities along the D&L Trail where visitors can enjoy the most rewarding heritage experiences. The spiral-bound, 6x9-inch, four-color guide also includes four new maps designed by the Heritage Conservancy—three of which pull out to 18 inches.

*(continued on page 2)*

## Partners and Prospects

by C. Allen Sachse

I thank every volunteer and partner for your diligent work along the D&L Corridor, preserving our heritage and enhancing the natural resources of the area. As the "heritage areas" movement evolves, I've seen the collective strength of our partners lead to accomplishments beyond our individual capacity—and even beyond my wildest imagination.

I'm pleased to tell you that your efforts will not go unnoticed—in fact, they will soon be recognized on a national stage. The Advisory Board to the Director of the National Park Service has initiated a study to measure the success of national heritage areas. Out of 24 national heritage areas, the D&L and the Blackstone River National Heritage Corridor, located in Rhode Island & Massachusetts, were the chosen heritage areas for the case studies. Brenda Barrett, NPS Coordinator of the National Heritage Areas Program, is facilitating the details of the partnership.

The time has come to showcase our accomplishments in historic preservation, recreation, environmental and economic improvement. Accomplishments such as 130 miles of useable trail, 50 miles of Delaware Canal and towpath improvements, 30 miles of rail-to-trail acquired, over 50 miles of rail-to-trail and towpath trail along the Lehigh under design; the preservation of five locks, an aqueduct, and lock tender houses; Two Rivers Landing, the Ice House, Old Mauch Chunk Station and much more.

The Conservation Study Institute of Woodstock, VT will manage the study, to be conducted by a doctoral candidate beginning this summer. He or she will assess accomplishments and outcomes, analyze the National Park Service investment in the area and offer recommendations for the future. Members of the Advisory Board will be visiting the Corridor and meeting with partners. In June 2005, results of the study will be presented at the Second International Heritage Development Conference in Nashville, TN. Please welcome our researcher to your length of the Corridor as we share the success of our national heritage site.

*Allen*

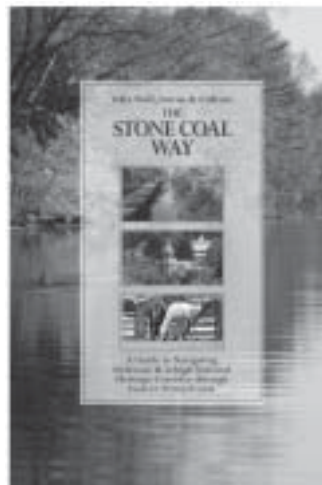
## Former Bethlehem Steel one of 11 "Most Endangered Places"

A cheer echoed up and down the Delaware & Lehigh Corridor on the day the former Bethlehem Steel site became "one of America's 11 most endangered places." Why cheer this not-so-complimentary label from the National Trust on Historic Preservation? Because, although the listing doesn't guarantee protection or funding of the site, it has been a powerful tool to save historic treasures in the past. The D&L submitted the application in hopes that the National Trust would recognize the fast-deteriorating blast furnaces and iron foundries that could preserve the history of an era. As the vision for Bethlehem Works evolves, this "endangered species" will draw the attention of local and national foundations and donors—who will help fund this industrial "museum" of sorts.



*The silhouette of a once-booming steel industry dominates the skyline at the former Bethlehem Steel site, which was recently voted "one of America's 11 most endangered places" by the National Trust on Historic Preservation.*

## Stone Coal Way (continued from front page)



Author of *Stone Coal Way* and former Rodale editor Tom Shealey brings a unique local perspective to the guide, and photographer Kristi Cochios, design firm Workhorse Design and the National Canal Museum contributed to its visual appeal. *Stone Coal Way* will be distributed for resale to regional bookstores and outdoor retailers and outfitters such as Nestor's. You can also purchase it directly on the D&L website at [www.delawareandlehigh.org](http://www.delawareandlehigh.org) or through wholesale book distributors.

Partial funding for this guide was provided by the National Park Service and the PA Department of Conservation & Natural Resources. Proceeds from the sale of the book

will benefit future operations of the D&L through the non-profit Delaware & Lehigh National Heritage Corridor, Inc.

**Order Your Copy Today!**

Don't wait...

**Pre-order *Stone Coal Way* today!**

Call 610-923-3548

or

Visit [www.delawareandlehigh.org](http://www.delawareandlehigh.org)

## Status of the Spine

### Trail projects along the Lehigh

**Spine:** the main collection of interconnected trails along the Lehigh and Delaware Rivers, extending from Wilkes Barre to Bristol.

The D&L Commission and its partners are leading the charge to build the D&L Trail, piece by piece. Building a trail using federal funding is akin to building a four-lane highway. Ownership, environmental clearance, design and bidding requirements enter in—making the process time-consuming and often tedious.

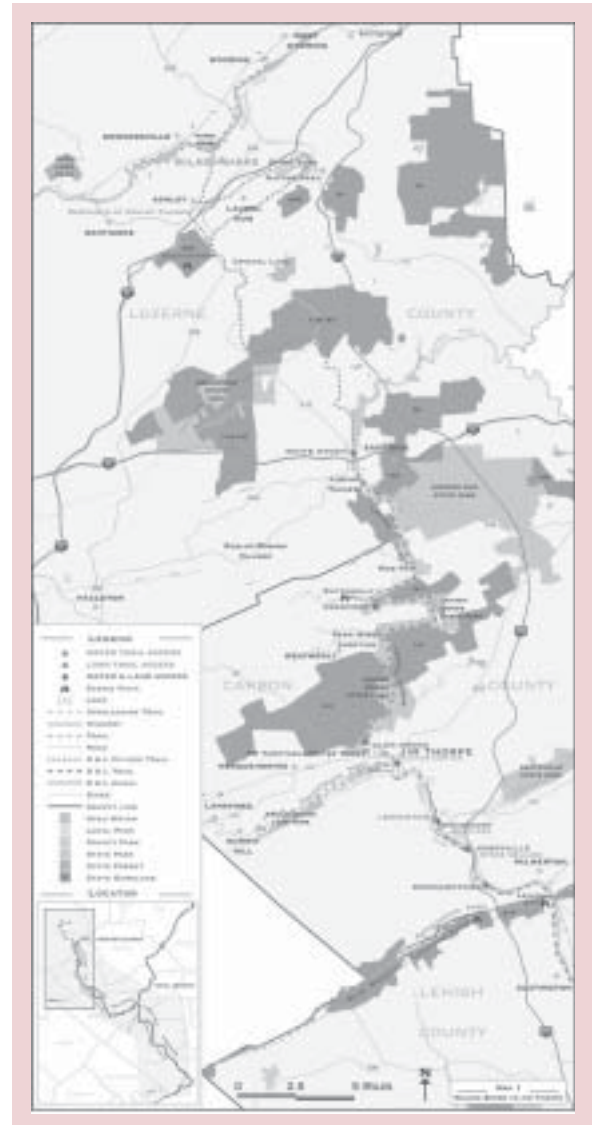
Here's our progress report for a range of trail projects along the historic route that took anthracite coal from mountain to market.

#### Luzerne County

- The Anthracite Scenic Trails Association is conducting a feasibility study to lay out on-sidewalk and on-street linkages between the D&L Trail and existing trails in Wilkes Barre and Ashley. Luzerne County has provided partial funding for this project. **Projected study completion: Summer 2005.**
- Pennoni Associates Inc. is creating a Master Site Plan for the Trail from the outskirts of Wilkes Barre through White Haven, which will show access points to Earth Conservancy land and an important connection to Lehigh Gorge State Park. The Master Site Plan will provide alternatives to continue the trail at Glen Summit, since the original railroad lands are privately held, along with alternative links to the Ashley Plains near Mountaintop. While some funding is available for streetscape improvements in White Haven and for construction of the trail north, future grants will be sought to continue improvements outlined by the Master Site Plan in White Haven and for additional trail construction to the north. **Projected design completion: December 2004**
- Improvements from Glen Summit to Port Jenkins are also being designed by Pennoni Associates with funding from the ISTEPA Project (Intermodal Surface Transportation Efficiency Act of 1991). **Projected design completion: December 2004.**

#### Carbon and Northampton Counties

- Clough, Harbour and Associates will conduct a feasibility study to continue the Trail from the south end of the Nesquehoning Trestle to the D&L Landing at the Old Mauch Chunk Railroad Station. They will also examine the feasibility of creating a pedestrian bridge across the Lehigh to link the D&L towpath with a proposed trail along the west side of the river in Carbon County. **Projected design completion: Summer 2005.**
- Using TEA-21 (Transportation Efficiency Act for the 21<sup>st</sup> Century) Enhancement funding for trail construction, Clough, Harbour and Associates are designing towpath trail improvements from Jim Thorpe through Weissport to Parryville—lands of the Lehigh Canal Recreation Commission in Carbon County. **Projected design completion: December 2004.**



- Clough, Harbour and Associates are also designing improvements to the trail from Freemansburg through Bethlehem Township to Hugh Moore Park in Glendon, Northampton County. **Projected design completion: December 2004.**

#### Lehigh County

- Environmental Planning and Design is working on preliminary design of the trail from North Catasauqua to Hanover Township using TEA-21 Enhancement funding for trail construction. **Projected design completion: Winter 2005.**
- Urban Research and Development Corporation and McTish, Kunkle and Associates will design the portion of the trail along the west bank of the Lehigh River from Lehighon in Carbon County to Cementon in Lehigh County. Preliminary design and environmental clearance for the project have been completed and final design is underway. The construction of a bridge replacement and bridge railings will be bid. **Projected design completion: Summer 2004.**
- Construction of the Trail segment from Lehigh Gap to Slatington is dependent upon the amount of remaining funds. Construction bids should be sought this year.

## D&L Trail Tender Training Series for Landowners “Maintenance Procedures” this Summer

The second training session for D&L landowners and maintenance staff, “Maintenance Procedures,” will be held Wednesday, August 4, 9 a.m. to noon at Hugh Moore Park in Glendon. This session will help maintenance staff lead a crew and supervise them on a trail, as well as teaching best management practices, maintenance tools and methods to maintain the trail in a holistic way.

It is imperative for landowners to send at least one representative who deals with on-the-trail issues to each session. Park management, planning staff and municipal officers serving as administrators to the trail will benefit, as well as park maintenance staff.

“We’re giving landowners resources to enhance, maintain and promote their portion of this beautiful trail,” says Trails Specialist Sherry Acevedo, who developed the Trail Tender training sessions at the request of landowners. “We’d like to start creating a more consistent level of maintenance up and down the Corridor.”

Future training sessions will be offered as follows:

**Training session 3:** Summer 2004

**Training session 4:** Fall 2004  
Special Projects

*Average length of session is 3 hours, depending upon specific session content.*



*Trail Tender Jim Schneck, a member of the Allentown Hiking Club, helps with a cleanup at Lock 29 located at the north end of White Haven.*

Training session three will help attendees identify the most prevalent plants along the trail, learn how to combat invasive plant species and learn revegetation of native plants. Training session four will cover the logistics, planning and management of special projects. It promises a look at special projects such as the lock stabilization at Lehigh Gorge State Park that preserved a historic high lift lock structure, and National Trails Day events.

Please RSVP for one or all of the training sessions to Sherry Acevedo, Trails Specialist, Delaware & Lehigh National Heritage Corridor at [dele.sherry@verizon.net](mailto:dele.sherry@verizon.net) or (610) 923-3548.

## Trail Tenders Activities by regions

All are welcome to participate!

**TENDERS NEEDED:** Crew leaders and volunteers needed to establish “teams” of Weed Watchers (plant identifiers) and Weed Warriors (invasive plant removers) on the D&L Trail to help us identify the native and invasive plants adjacent to the trail, river, and canal. Groups, schools, individuals, and garden clubs are encouraged to participate! Contact Sherry Acevedo, Trails Specialist, D&L Corridor, at (610) 923-3548 or [dele.sherry@verizon.net](mailto:dele.sherry@verizon.net).

*Also offering Service Learning Projects for School Districts to conduct fieldwork on the D&L Trail for ecology, plant identification and biology.*

**Lehigh Gorge State Park Region:** White Haven to Jim Thorpe  
*Saturday, October 30, 2004* 10 a.m. - 3 p.m.

Stabilization efforts for Lock #28 at the south end of White Haven. Meet at the White Haven access parking lot south of the Route 80 overpass. RSVP to Sherry at (610) 923-3548 or [dele.sherry@verizon.net](mailto:dele.sherry@verizon.net) or Gene Scharle at (610) 432-5652.

Directions: [www.dcnr.state.pa.us](http://www.dcnr.state.pa.us) - click on Lehigh Gorge State Park.

*Saturday, November 6* 10 a.m. - 3 p.m.

Stabilization efforts at the remnants of Lock #24 and Dam #16. Meet at the Lehigh Tannery parking lot off of Route 534. RSVP to Sherry at (610) 923-3548 or [dele.sherry@verizon.net](mailto:dele.sherry@verizon.net) or Gene Scharle at (610) 432-5652.

**Delaware Canal State Park Region:** Easton to Bristol  
*Yardley Canal Festival* *Saturday, July 10*

Informational booths will be set up along the canal towpath and within the Borough of Yardley, celebrating this historic canal and the community surrounding it.

*Friends Share the Towpath Day* *Saturday, July 24*

Virginia Forrest Recreation area. Park and multi-use trail etiquette literature available at the booth next to the bridge.

**Northern Lehigh Region:** Lehigh Gap - Slatington  
*Slate Heritage Trail* *Saturday, October 2, 9 a.m. - Noon*  
Join the Northern Lehigh Historical Society, Slatington Lions Club, and other tenders for a trail cleanup and hike along the Slate Heritage Trail, following Trout Creek from Slatington to the covered bridge. Contact Jodi Nestor at (610) 767-8452 or [PHPSERVICE@aol.com](mailto:PHPSERVICE@aol.com)

**Trail Tenders Contact:** Sherry Acevedo, Trails Specialist, D & L Corridor, at (610) 923-3548 or [dele.sherry@verizon.net](mailto:dele.sherry@verizon.net). For further updates & Tenders activities, visit our website at [www.delawareandlehigh.org](http://www.delawareandlehigh.org).

Please dress appropriately for the weather and bring a water bottle. Clean-ups are held rain or shine, unless extreme weather conditions exist—call your contact to find out if there is a cancellation.

*The mission of the D&L Trail Tenders Program is to enhance, sustain, and promote the Delaware & Lehigh National Heritage Corridor Trail System, for recreation, education, and enjoyment of well-maintained trails, providing linkage to the Corridor history and a passage to communities and connecting trails. The D&L Trail Tenders represent the volunteer groups, individuals, and associations established in regions along the 165-mile D&L Trail, its water trails, and spur trails.*

## Share the Trail Days

“Whoa! There’s a horse coming toward us. What should we do, Jim?”

“Let’s dismount our bikes, Sherry. That seems to be the safest option.”

Ever wondered about proper trail etiquette when you come across a horse on the trail? Come to a D&L Trail Tenders “Share the Trail Day” to better understand trail conflict and learn trail-sharing techniques. The key to minimizing user conflict on multiple-use, or multi-use, trails is communication and education. It’s about respecting each other and finding a common ground to interact positively.

On multi-use trails, which are predominant in the D&L Corridor, hikers and mountain bikers often need to share the trail with people on horseback, mules pulling canal boats, strollers, dog walkers, nature seekers and/or people fishing. And that can be a real challenge. This workshop’s goal is to promote trail safety, protect natural resources and provide high-quality experiences for all of those groups.

Previous Share the Trail Days have been a huge success. About 20 attendees learned how to share the trail with a 1.5-ton horse during the first event at the proposed Slate Heritage Trail in Washington Township. Lehigh Valley Horse Council President Kathy Grube and members Harvey Eckhart and Kevin Martin hosted the workshop with Kathy’s horse, Sahara. Another successful day was hosted by the Allentown Hiking Club, the Valley Mountain Bikers and the Lehigh Valley Horse Council at the Slatedale Fire Company. Join us for one of our upcoming Share the Trail Days:

### Saturday, June 26, 2004

#### Share the Trail Day Clinic on the Delaware Canal—New Hope

10 a.m. - Noon

Join the Trail Tenders at the Locktender’s House in New Hope for a multi-use trail etiquette clinic. Learn trail-sharing techniques and communication strategies. Trail demonstrations will be conducted.

Meet at the Locktender’s House, 145 South Main Street, New Hope. Park in the New Hope Canal Boat Company parking lot off of New Street. For more information, contact Delaware Canal State Park Ranger Charlie Broadwater at (610) 982-5560, [cbroadwater@state.pa.us](mailto:cbroadwater@state.pa.us).

### Saturday, September 11, 2004

#### Share the Trail Day Clinic on the Delaware Canal—Theodore Roosevelt Recreation Area

10 a.m. - 2 p.m.

Join the Trail Tenders at the Theodore Roosevelt Recreation Area (or Groundhog Lock), in Raubsville, PA. A multi-use trail etiquette clinic will demonstrate how a hiker, mountain biker, and equestrian can share the same trail. For more information, contact Ranger Charlie Broadwater at (610) 982-5560, [cbroadwater@state.pa.us](mailto:cbroadwater@state.pa.us).



*Lehigh Valley Horse Council President Kathy Grube demonstrated the best way to share the trail with her 1.5-ton horse, Sahara, during previous Share the Trail Days.*

## Grants Awarded: Pennsylvania Heritage Parks and Growing Greener

Congratulations to the partners (listed below) who received state funding for the 2003-2004 Pennsylvania Heritage Parks and Growing Greener appropriations. The Pennsylvania Department of Conservation and Natural Resources (DCNR) approved \$297,000 for the Delaware & Lehigh National Heritage Corridor. One of DCNR’s highest priorities is to build community conservation partnerships with local government, businesses and non-profit organizations, and the Pennsylvania Heritage Parks Program is a key part of their mission.

Projects that will receive funding include:

- Exhibits and Cabinetry for the Henry Homestead, Jacobsburg National Historic District located at Jacobsburg State Park, Northampton County
- Restoration and Improvements to the former 1915 Lehigh High School- Phase II, Lehigh, Carbon County
- Corridor Market Towns Improvement Programs - Phase II: Includes facade improvements in White Haven, Lansford, Jim Thorpe, Lehigh, Palmerton, Slatington, East Side, Weatherly, Nesquehoning, Summit Hill, Coaldale, Weissport and Walnutport
- Interactive Exhibits at the National Canal Museum, Easton, Northampton County
- Hugh Moore Park Master Plan Update, Easton, Northampton County
- Management Grant for the D&L National Heritage Corridor

*The Delaware & Lehigh National Heritage Corridor selects projects based on implementation of the Management Action Plan developed by the Commission. The D&L staff seeks applicants throughout the Corridor. Next year’s application process begins in Fall 2004.*



*The Henry Homestead located at Jacobsburg State Park, Northampton County.*

*Photo courtesy of Jacobsburg Environmental Education Center.*

Delaware & Lehigh National Heritage Corridor Commission  
1 South 3rd Street, 8th Floor  
Easton, PA 18042

The Delaware & Lehigh National Heritage Corridor and State Heritage Park is a joint effort of private groups and interested citizens, county and municipal governments, the Commonwealth of Pennsylvania and the federal government to conserve cultural and natural resources and provide appropriate development opportunities for a sustainable future.

For further information, to be added to the mailing list, or to correct your address, please write to the above address or call 610-923-3548.

PRSR STD  
US POSTAGE  
**PAID**  
PERMIT NO. 550  
ALLENTOWN, PA



## A Federal, State, and Local Partnership

### The Commission's staff includes:

C. Allen Sachse  
*Executive Director*

Denise G. Holub  
*Chief Financial Officer/Grants Administrator*

Isidore "Bill" Mineo  
*Stewardship and Trail Manager*

Sherry L. Acevedo  
*Trail Specialist*

Elissa G. Marsden  
*Heritage Development Specialist*

Dale Freudenberger  
*Corridor Market Towns Manager*

Doug Reynolds (consultant)  
*Historic Program Manager*

Rayne R. Schnabel  
*Special Projects Coordinator*

Alyssa Vazquez, *Office Assistant*

#### Newsletter Writing & Design:

Kelly Prentice – *Writer/editor*

Elaine Crooks, Beyond Words – *Designer*



## D&L to host 2006 World Canals Conference

The World Canals Conference in St. Catherines, Canada was attended by D&L Special Projects Coordinator Rayne Schnabel. The theme for the conference "Channels for Prosperity" guided delegates through the past, present and future of the Welland Canal.

Along with many informative presentations, Rayne also participated in the traveling workshops through the thriving canal system.

In 2006, the D&L will be hosting the World Canals Conference endorsing the heritage within the region. The Corridor has secured a solid foundation by forming partnerships with all levels of government as well as the private sector to support its preservation, conservation and interpretive efforts. This bond is something they are extremely proud of.

Throughout the next two years, the D&L and its partners will be turning this wonderful opportunity into a three-day event showcasing the Corridor and its energetic communities. Delegates from around the world will be enjoying and learning about eastern Pennsylvania.